

# CALLIERT

## JEEP WRANGLER JL ROOF RACK



Begin by unpacking all items and inspecting them for damage or missing items.  
Any concerns, please contact: [tech@calliert4x4.com](mailto:tech@calliert4x4.com)

**Before installation**—Read and understand all instructions, warnings,cautions,and notes contained in this installation instruction guide. Consult your vehicle owner’s manual for proper disconnection of electrical and lifting of vehicle if required for installation of this product.

This install may require some technical skills and knowledge of basic mechanical work.If you do not feel that you are capable of performing this install please take this product to a trained professional.

After reading this guide please contact us with any questions or concerns before installing product.  
**E-mail: [tech@calliert4x4.com](mailto:tech@calliert4x4.com)**

***CALLIERT is not responsible for any bodily injury or harm to you or your vehicle as a result of an improper install.***

Proper installation of this kit requires knowledge of the factory recommended procedures for removal and installation of original equipment components. We recommend that the factory shop manual and any special tools needed to service your vehicle be on hand during the installation.Installation of this kit without proper knowledge of the factory recommended procedures may affect the performance ofthese components and the safety of the vehicle.

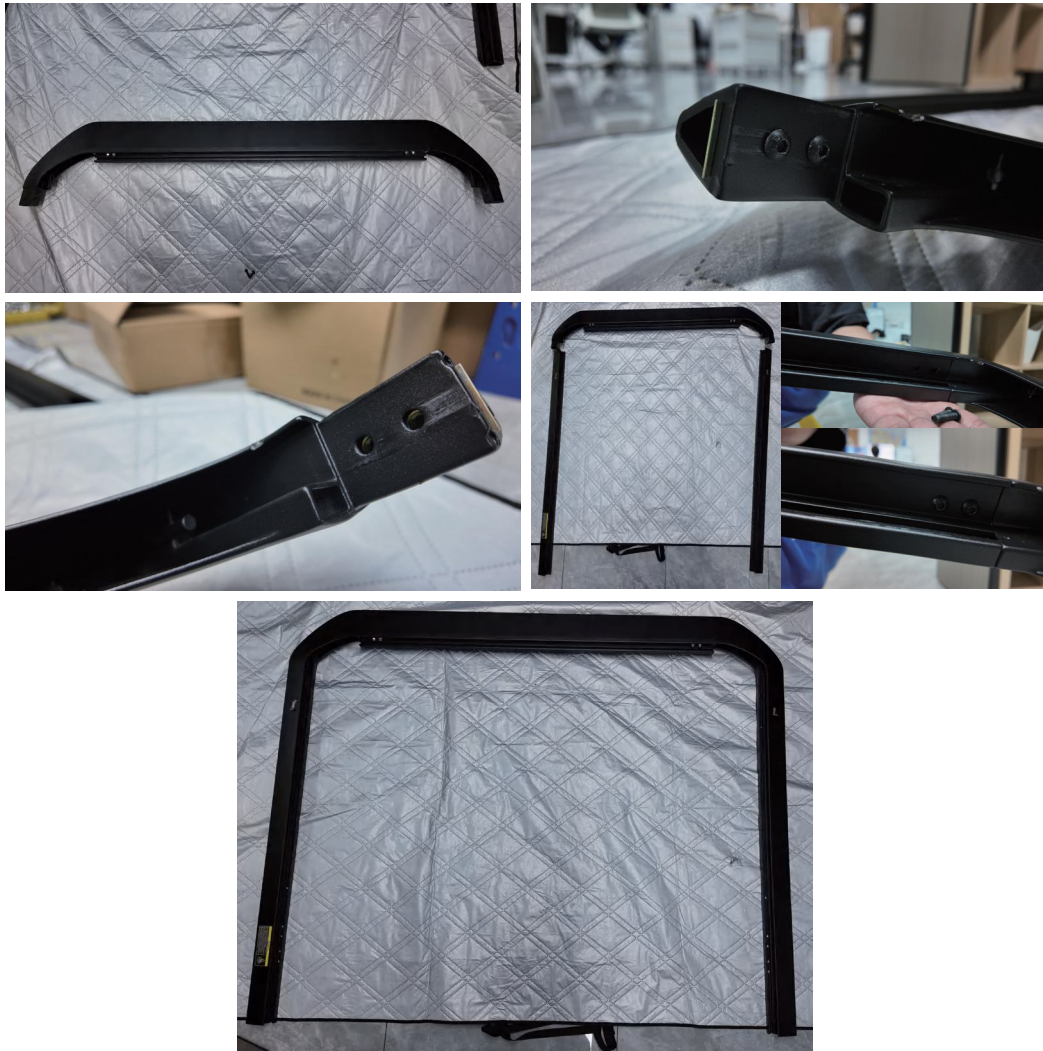
• *Always wear eye protection when operating power tools.* •

Inspect all contents of this package to make sure product is not damaged and all installation hardware has been included. If parts are missing from kit, please be prepared to provide the following information:

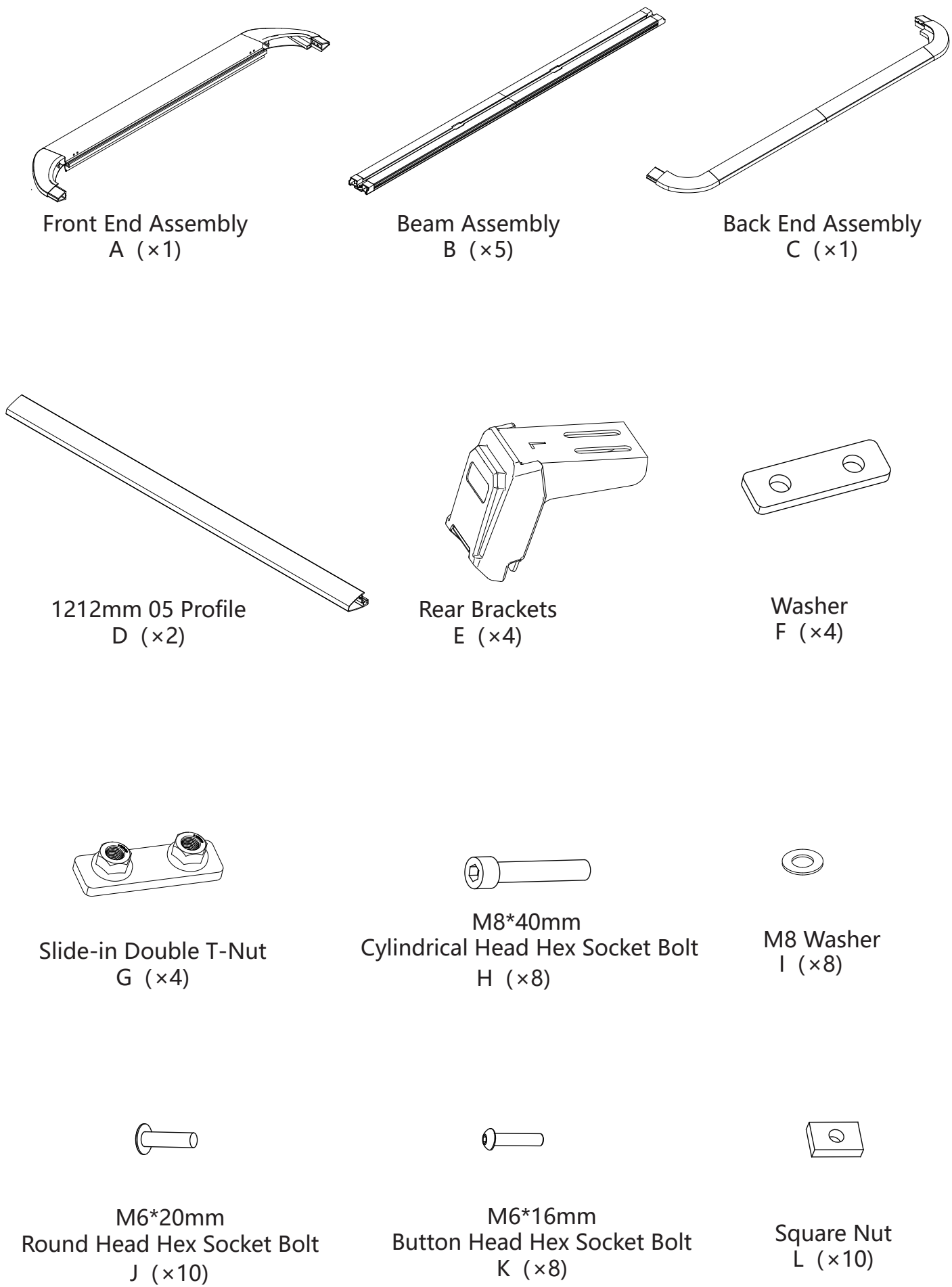
• Name of purchase location	• Date above Bar Code
• Bar Code on side of box	• Date inside box cover

Visit our website at: <https://www.aotowo4x4.com>

### INSTRLATION MRNUAL



Prepare the required components (A x1, D x2).  
First, remove the pre-installed K from component A, then insert A into D.  
Finally, secure A and D in place using K.



### INSTRLATION MRNUAL



Prepare the required components (B x5, J x10, L x10).  
First, screw components J and L into the mounting holes of B  
(Note: do not fully tighten, ensuring sufficient clearance between B and L).  
Then, slide component L into the groove of D.  
Finally, position B at the desired location and fully tighten J  
(Note: ensure the crossbar adjustment does not block the screw holes).

CALLIERT

CALLIERT