

# CALLIERT

## Front Tube Doors

Installation Manual:  
for Jeep Wranglers 2007 - 2018 JK



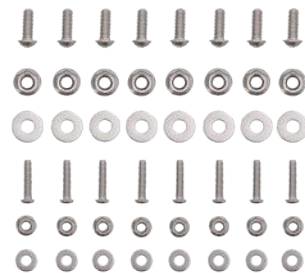
**Hinge**



**Side mirror**



**Strap**



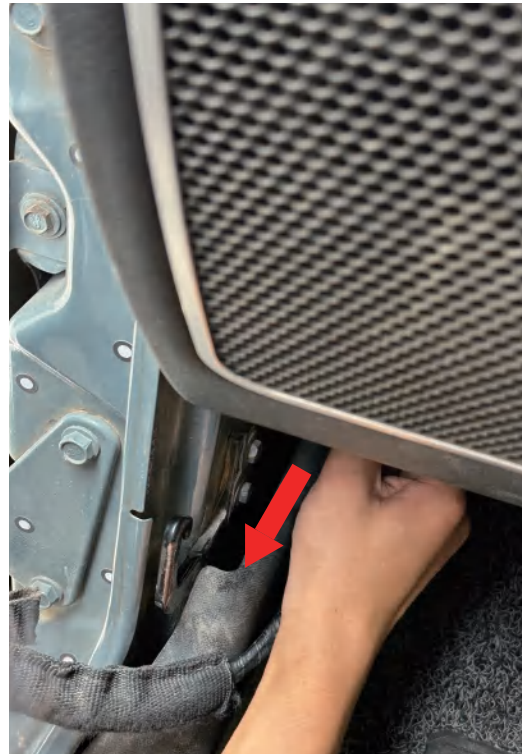
**Bolt & Nut & Washer**



**Note: Disconnect wiring harness before removing the door.**



(1)



(2)



(3)



(4)

Use a Hex key wrench to loosen the screws and remove the cover plate.  
Disconnect wiring harness before removing the door.  
Disassemble the electronic components responsible for factory car door control and detach the strap from the original car door before removing it.



(5)



(6)

Locating the required components.

Assembling the strap and bottom hinge, the hinges are connected to the car door.

**Note: Avoid over-tightening the screws, leave slightly loose for further adjustment later.**





(7)

Reattach the door to the vehicle securely.



(8)



(9)

Gently swing the door open and loop the door check strap over the hook on the inside of the door. Repeat this process for the remaining hinges.



**( 10 )**

**Align the optional side mirrors with the four holes in the mounting bosses on the doors.**

**The check straps have multiple positions to allow for adjustment. Secure the strap to the vehicle body and conceal it with a protective cover. Refer to the diagram for proper closure of the car door and secure tightening of the screws.**

